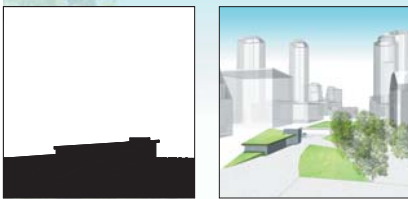
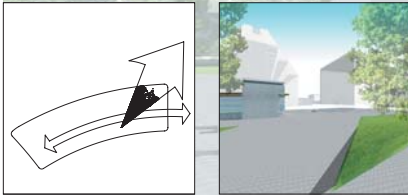


Building as Landscape



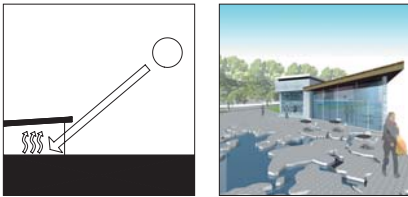
with its green roof, the pavillion evolves from the landscape and generates its own space, managing the flow of the greenway.

Directing a Path



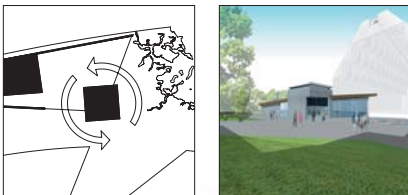
a swatch of the landscape is cut out to direct visitors towards the harbor islands boat docks. a scale model of the harbor islands erodes the corner curb as part of that path, orienting visitors to their destination.

Letting in the Light



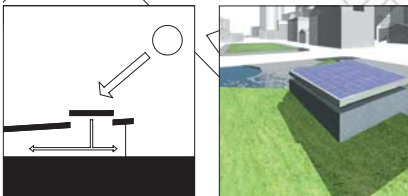
southern glazing replaces where the landscape is cut, allowing natural daylighting and passive solar heating of the main interior space.

Center of Circulation



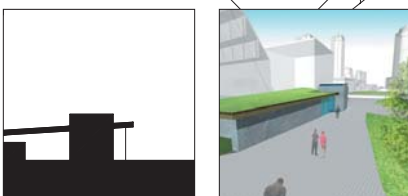
the information center situates itself on the corner of two building faces activated by the greenway, negotiating a flow of interior and exterior spaces.

Generating Power



a 32kv BIPV array forms the roof plane of the information center, providing renewable energy to operate the pavillion.

Natural Materials



in addition to the green roof, the stone and paving that make up the walls and ground plane have been chosen for their indigenous new england qualities and thermal mass characteristics.



HARBOR ISLANDS PAVILLION

where does the natural-environment end and the built-environment begin? can that line be blurred or possibly erased?

the rose kennedy greenway is an oportune site to pose such questions as it attempts to reintegrate the waterfront of boston to the rest of the city, a green space and an urban space all at once.

our design reflects this duality, using the natural elements specific to the site to complement the intention of the pavillion's urban agenda. in this context, a sustainable design is not only desirable, but inherent within the solution. thus, our pavillion design will not only respond with a sensitivity to nature, but also promote a sensibility about one (interwoven) environment.

